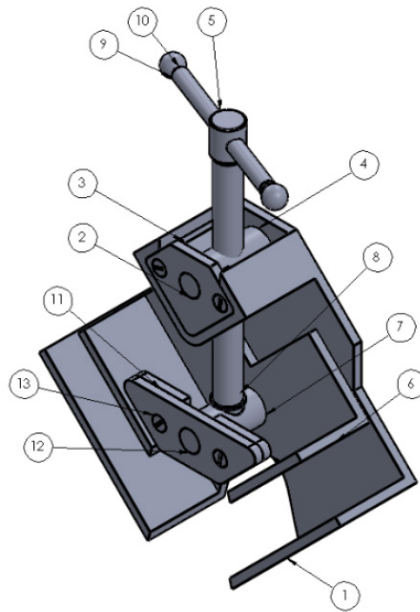
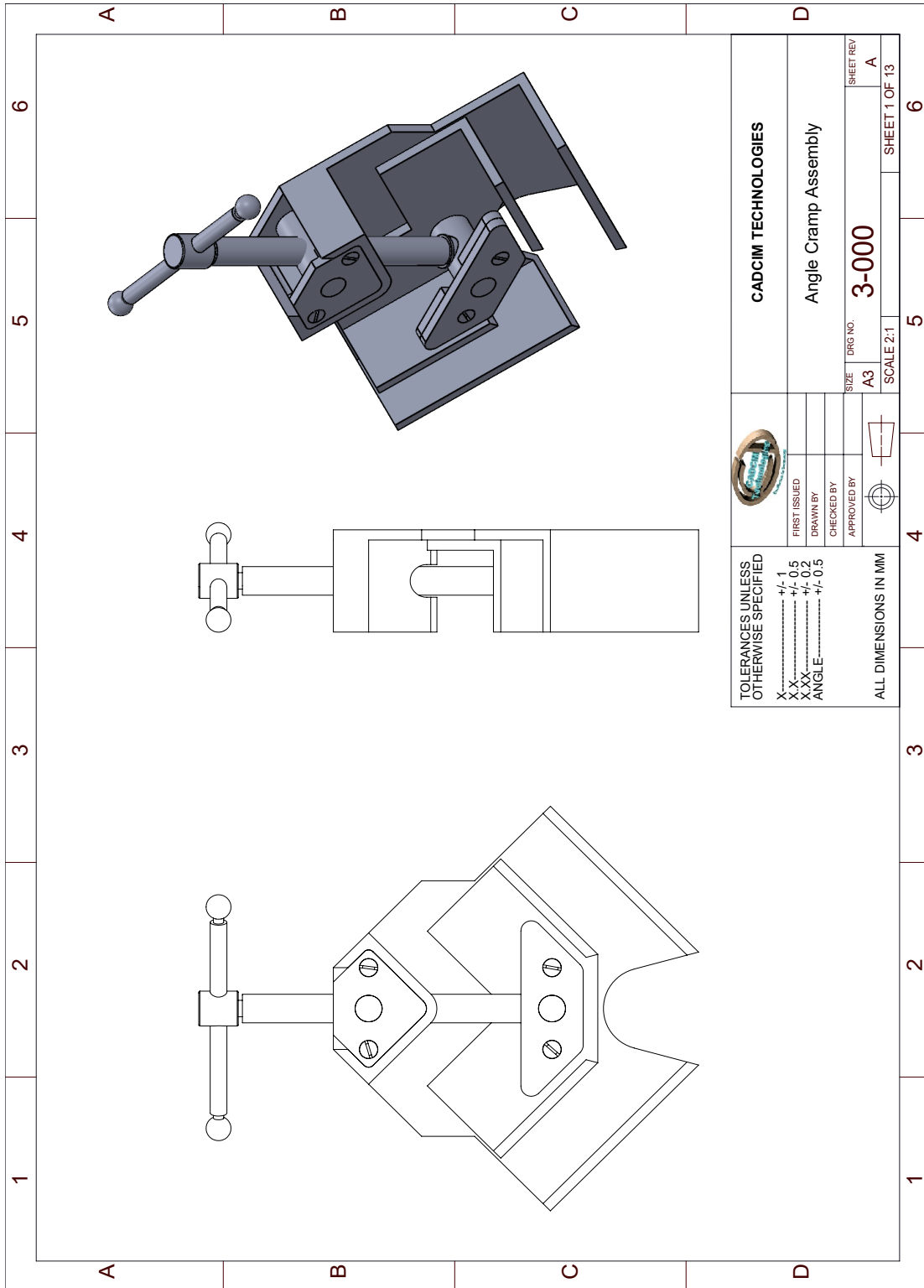
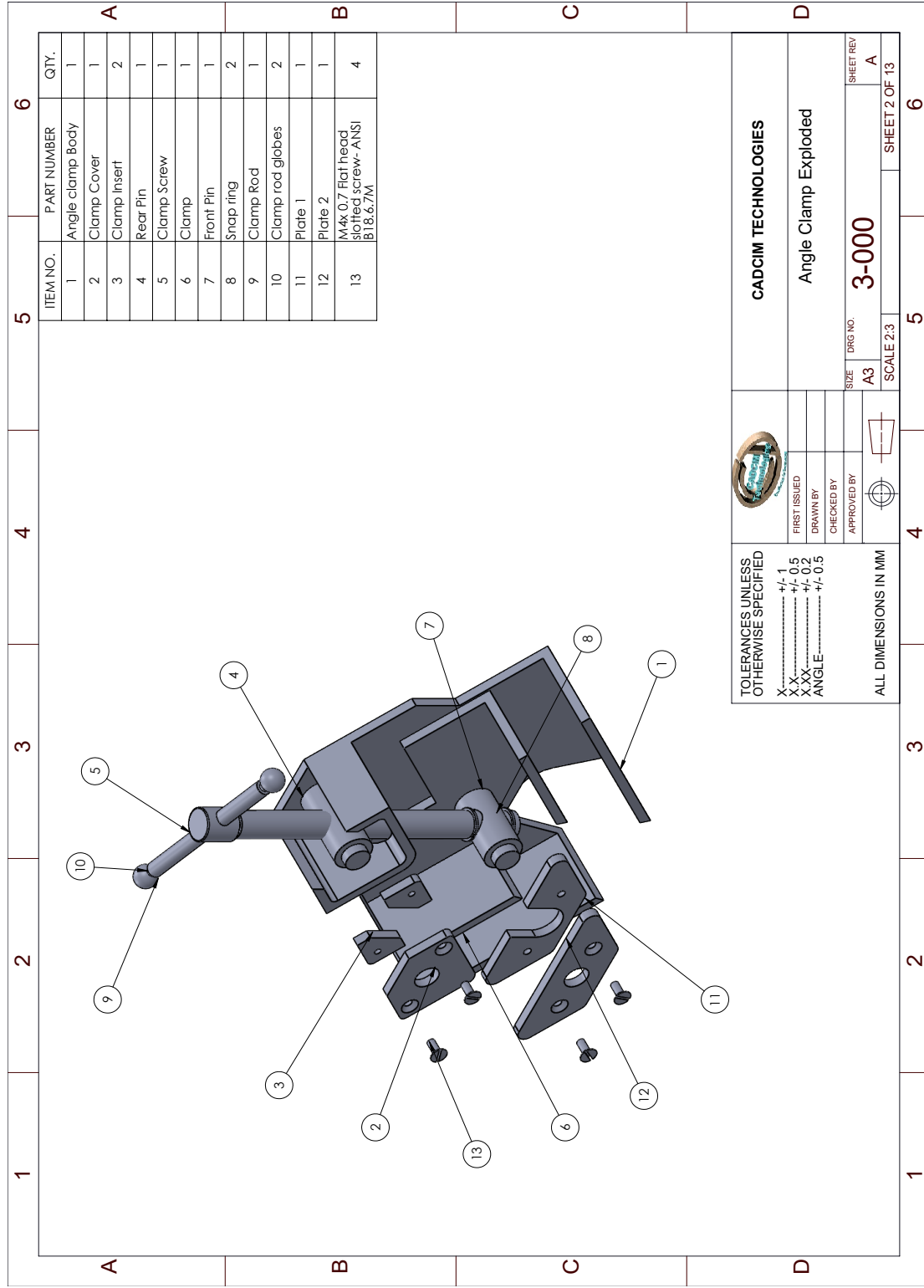


Project 3


Angle Clamp Assembly







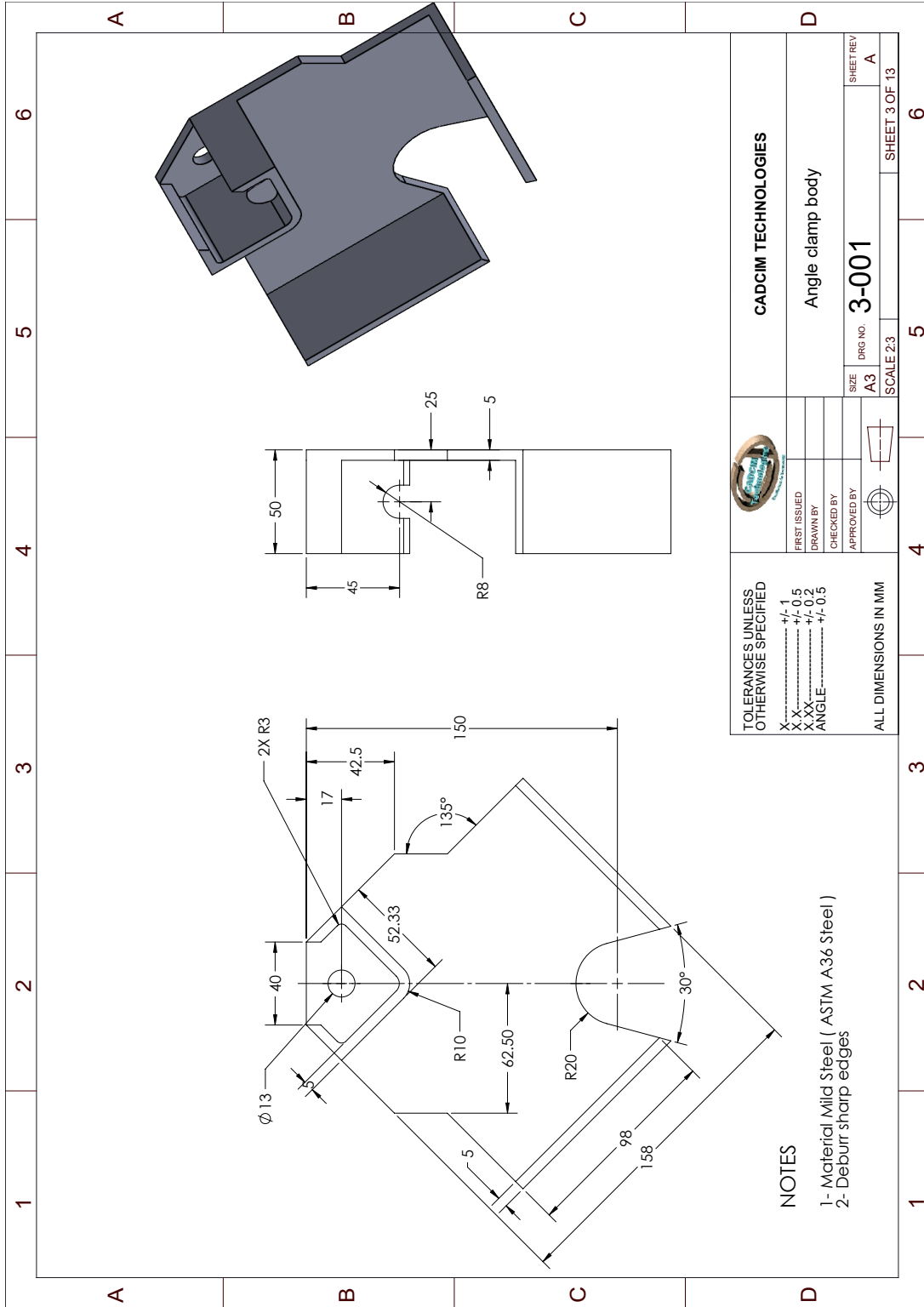
ITEM NO.	PART NUMBER	QTY.
1	Angle clamp Body	1
2	Clamp Cover	1
3	Clamp Insert	2
4	Rear Pin	1
5	Clamp Screw	1
6	Clamp	1
7	Front Pin	1
8	Snap ring	2
9	Clamp Rod	1
10	Clamp rod globes	2
11	Plate 1	1
12	Plate 2	1
13	M4x0.7 Flat head bolt screw-ANSI B18.6.7M	4

		CADTUM TECHNOLOGIES	
TOLERANCES UNLESS OTHERWISE SPECIFIED X----- +/- 1 XX----- +/- 0.5 XXX----- +/- 0.2 ANGLE----- +/- 0.5		Angle Clamp Exploded	
FIRST ISSUED DRAWN BY CHECKED BY APPROVED BY		SIZE A3	
ALL DIMENSIONS IN MM		DRG NO. 3-000	
SCALE 2:3		SHEET REV A	

1 2 3 4 5 6

A B C D

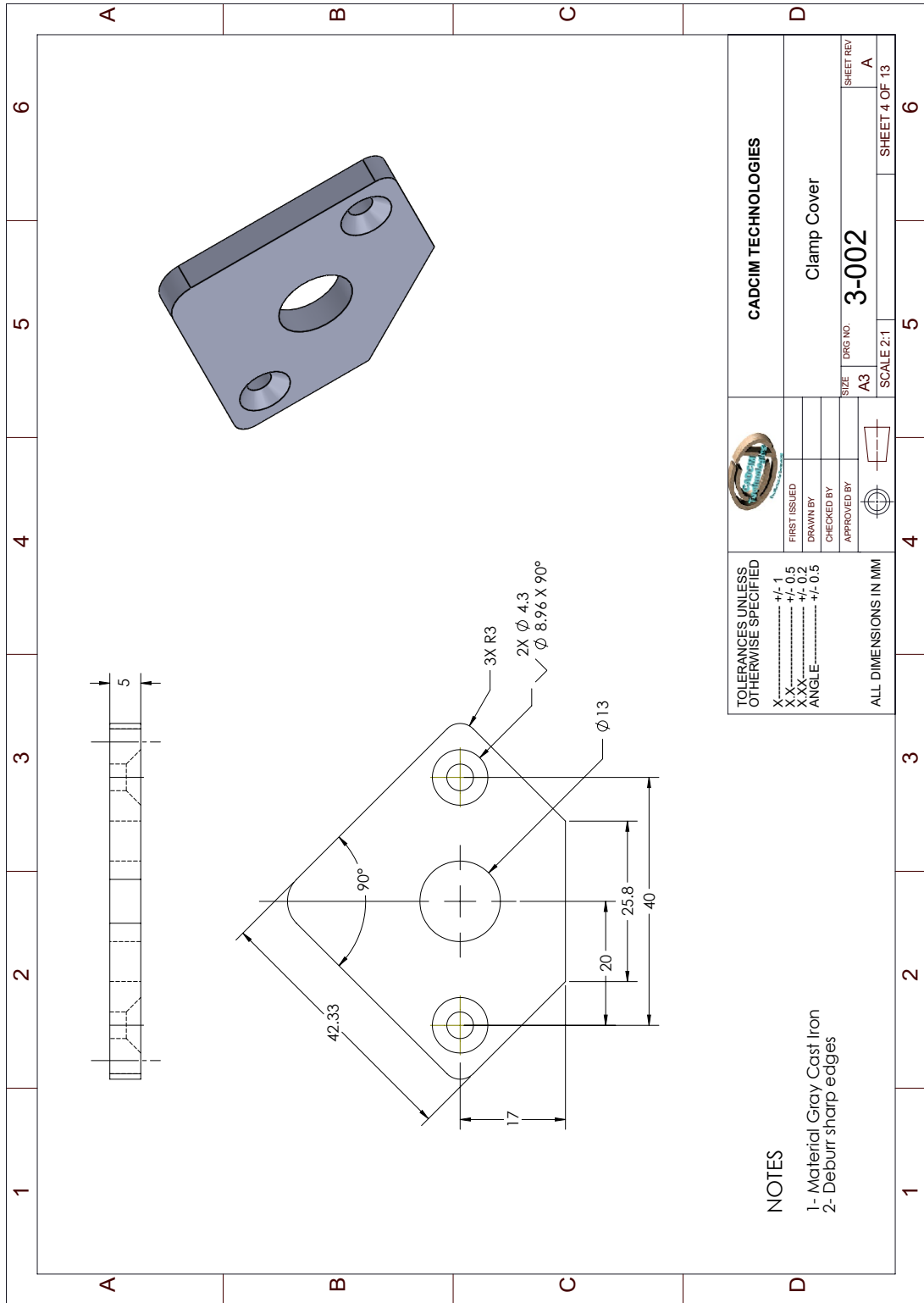
1 2 3 4 5 6




<p>TOLERANCES UNLESS OTHERWISE SPECIFIED</p> <p>X..... +/- 1 X.X..... +/- 0.5 X.XX..... +/- 0.2 ANGLE..... +/- 0.5</p>		<p>CADCIM TECHNOLOGIES</p> <p>Angle clamp body</p>	
<p>ALL DIMENSIONS IN MM</p>		<p>DRG NO. 3-001</p>	
<p>SIZE A3</p>		<p>SCALE 2:3</p>	
<p>FIRST ISSUED</p>		<p>SHEET REV A</p>	
<p>DRAWN BY</p>		<p>SHEET 3 OF 13</p>	
<p>CHECKED BY</p>		<p>APPROVED BY</p>	

NOTES

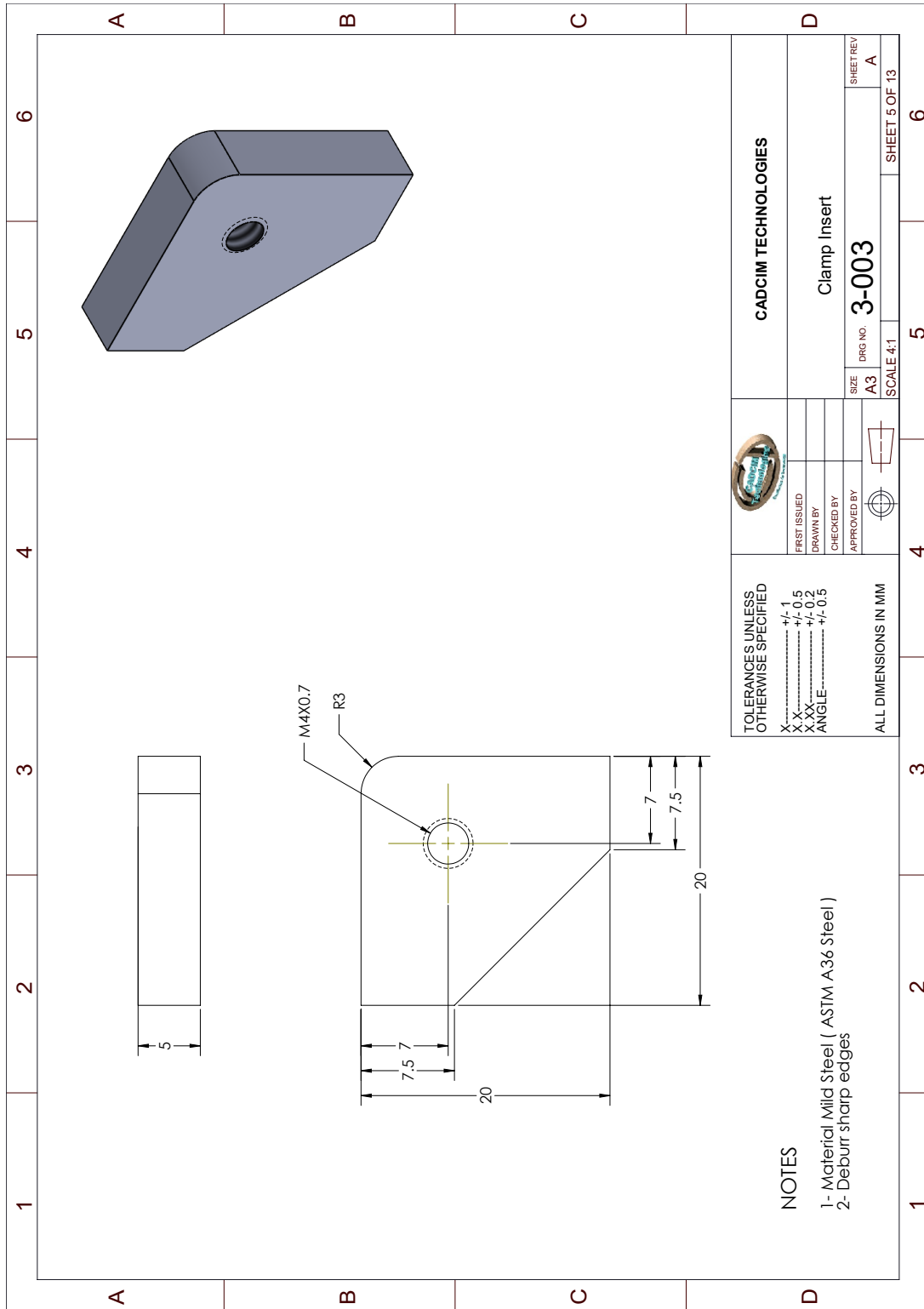
- 1- Material Mild Steel (ASTM A36 Steel)
- 2- Deburr sharp edges

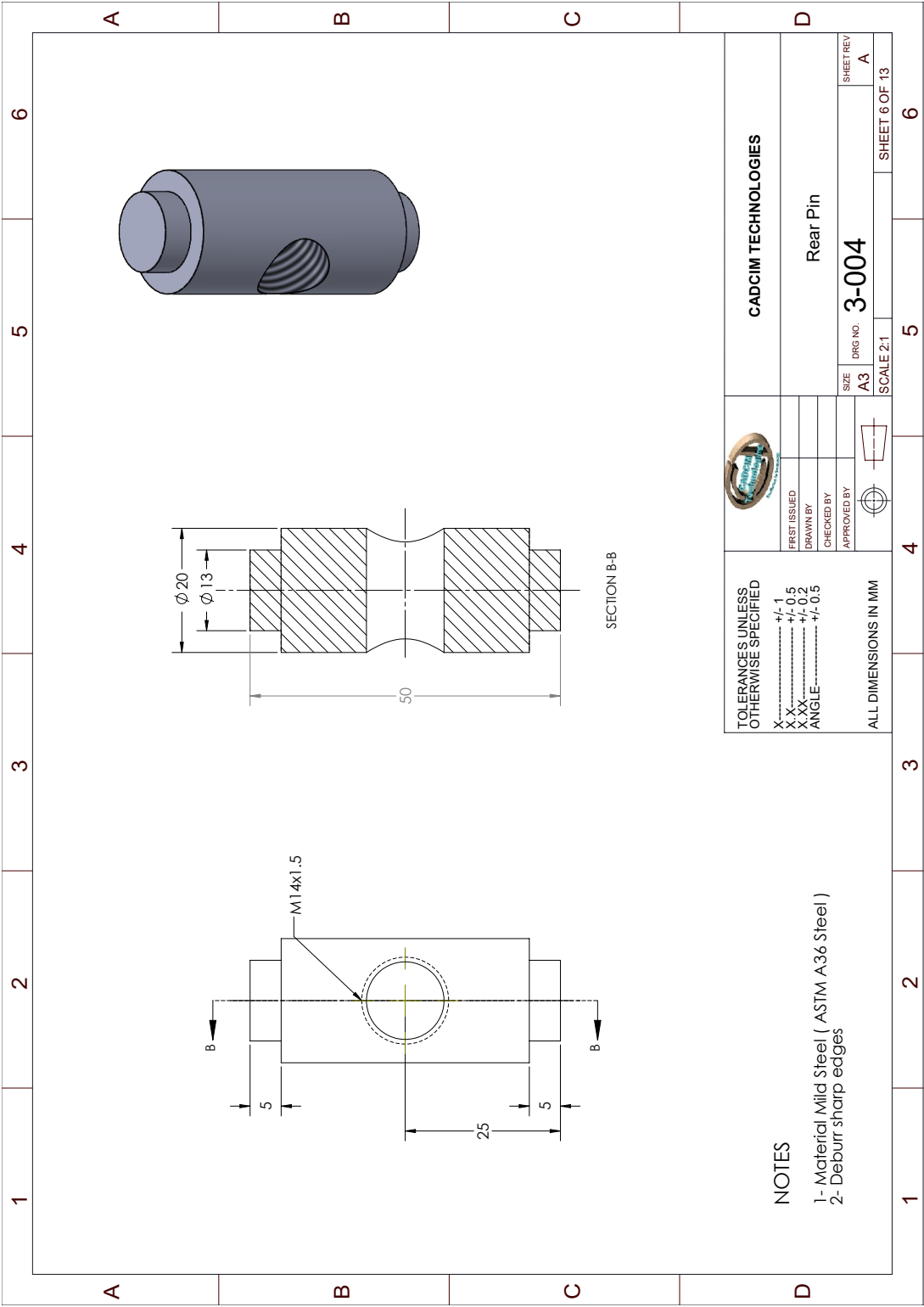


TOLERANCES UNLESS OTHERWISE SPECIFIED X..... +/- 1 XX..... +/- 0.5 XXX..... +/- 0.2 ANGLE..... +/- 0.5				CADCIM TECHNOLOGIES	
FIRST ISSUED DRAWN BY CHECKED BY APPROVED BY		DRG NO.		Clamp Cover	
ALL DIMENSIONS IN MM		SIZE A3		DRG NO. 3-002	
		SCALE 2:1		SHEET REV A	
				SHEET 4 OF 13	

NOTES

- 1- Material Gray Cast Iron
- 2- Deburr sharp edges

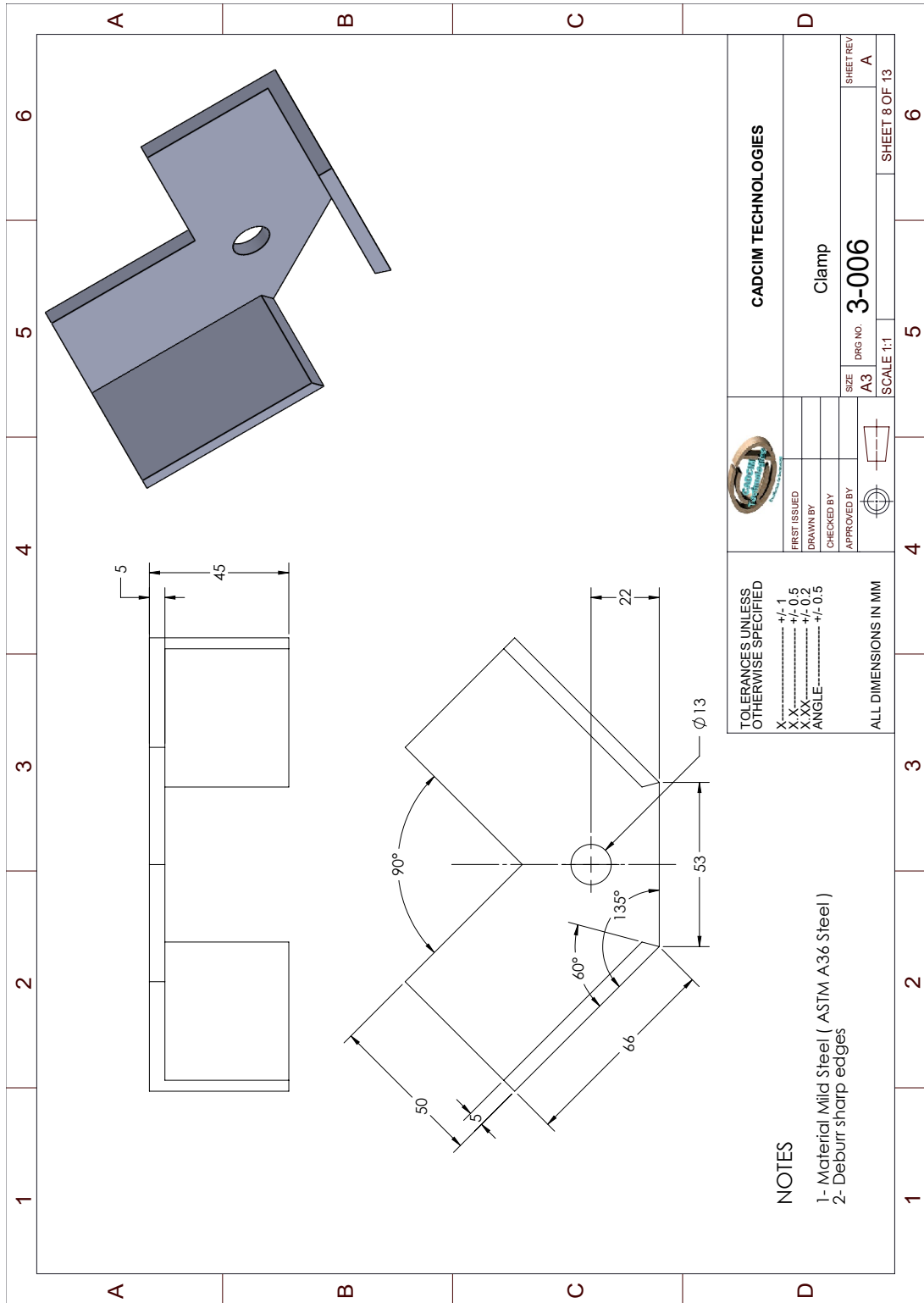




<p>TOLERANCES UNLESS OTHERWISE SPECIFIED</p> <p>X..... +/- 1</p> <p>X X..... +/- 0.5</p> <p>X XX..... +/- 0.2</p> <p>ANGLE..... +/- 0.5</p>		<p>ALL DIMENSIONS IN MM</p>	
<p>CADCIM TECHNOLOGIES</p>		<p>Rear Pin</p>	
<p>DRG NO. 3-004</p>		<p>SHEET REV. A</p>	
<p>SIZE A3</p>		<p>SCALE 2:1</p>	
<p>SCALE 2:1</p>		<p>SHEET 6 OF 13</p>	

NOTES

- 1- Material Mild Steel (ASTM A36 Steel)
- 2- Deburr sharp edges



NOTES

- 1- Material Mild Steel (ASTM A36 Steel)
- 2- Deburr sharp edges

TOLERANCES UNLESS OTHERWISE SPECIFIED

- X..... +/- 1
- X.X..... +/- 0.5
- X.XX..... +/- 0.2
- ANGLE..... +/- 0.5

ALL DIMENSIONS IN MM



FIRST ISSUED

DRAWN BY

CHECKED BY

APPROVED BY



CADCIM TECHNOLOGIES

Clamp

DRG NO. **3-006**

SIZE **A3**

SCALE 1:1

SHEET REV

A

SHEET 8 OF 13

6

5

4

3

2

1

A

B

C

D

6

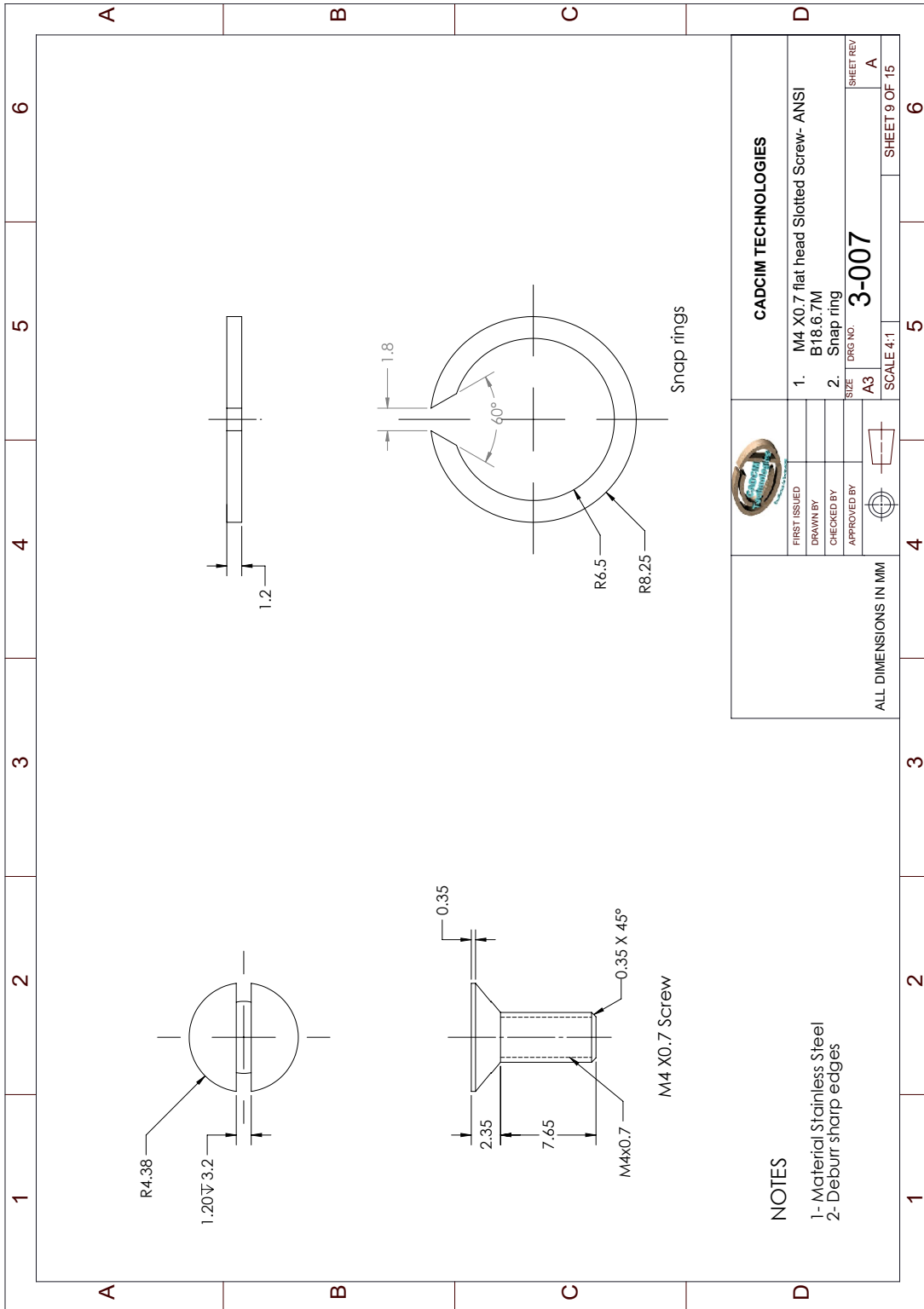
5

4

3

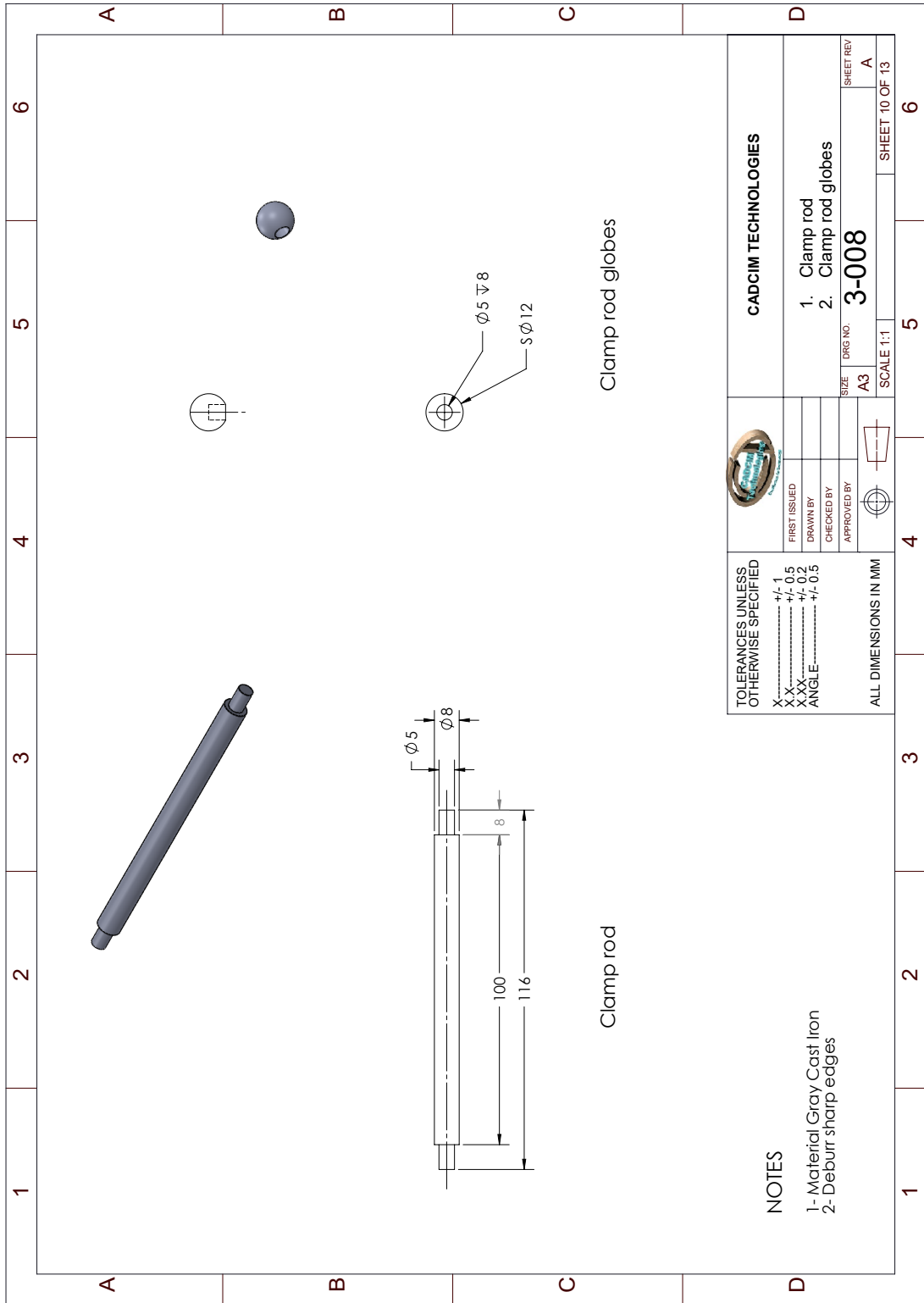
2

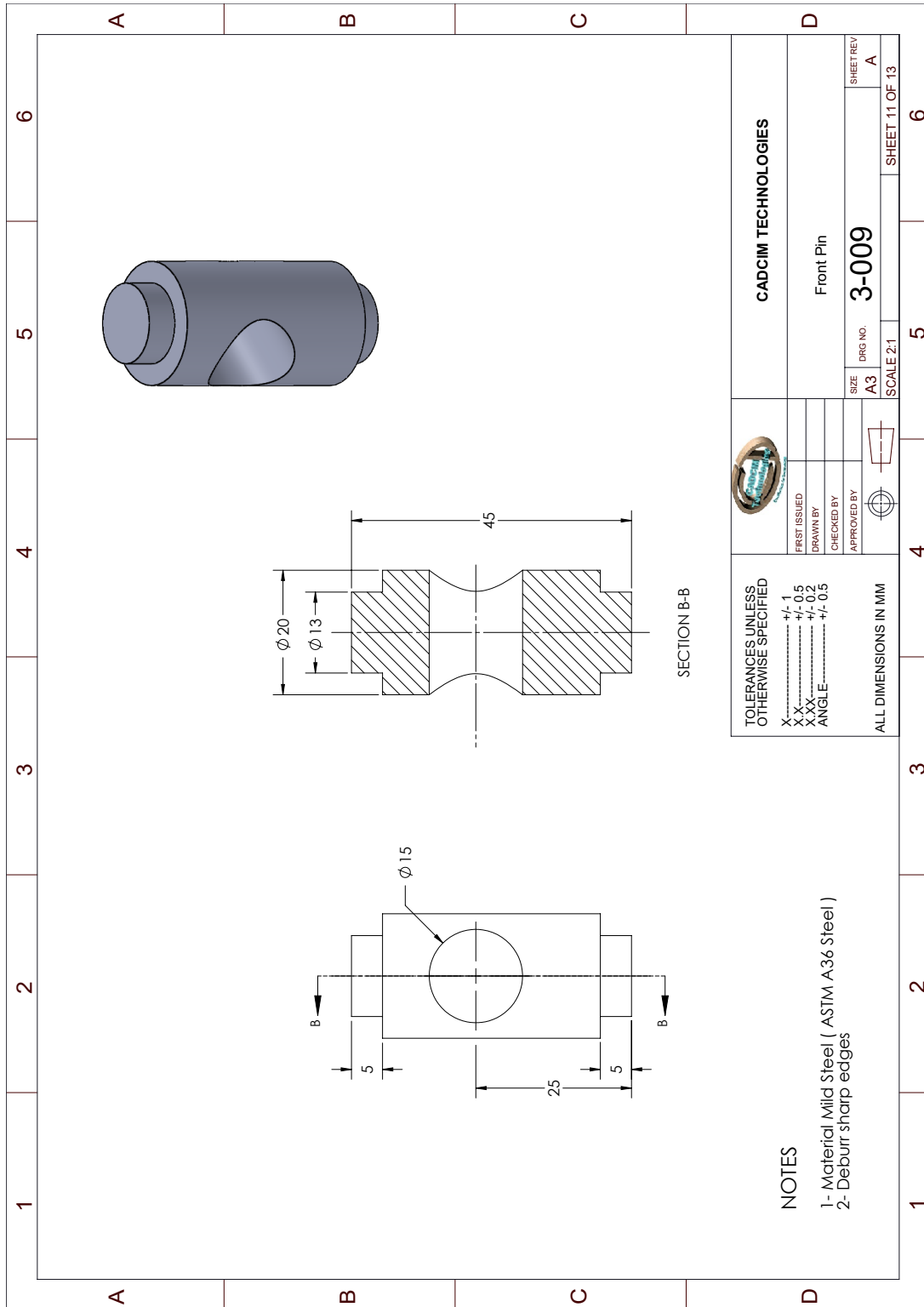
1

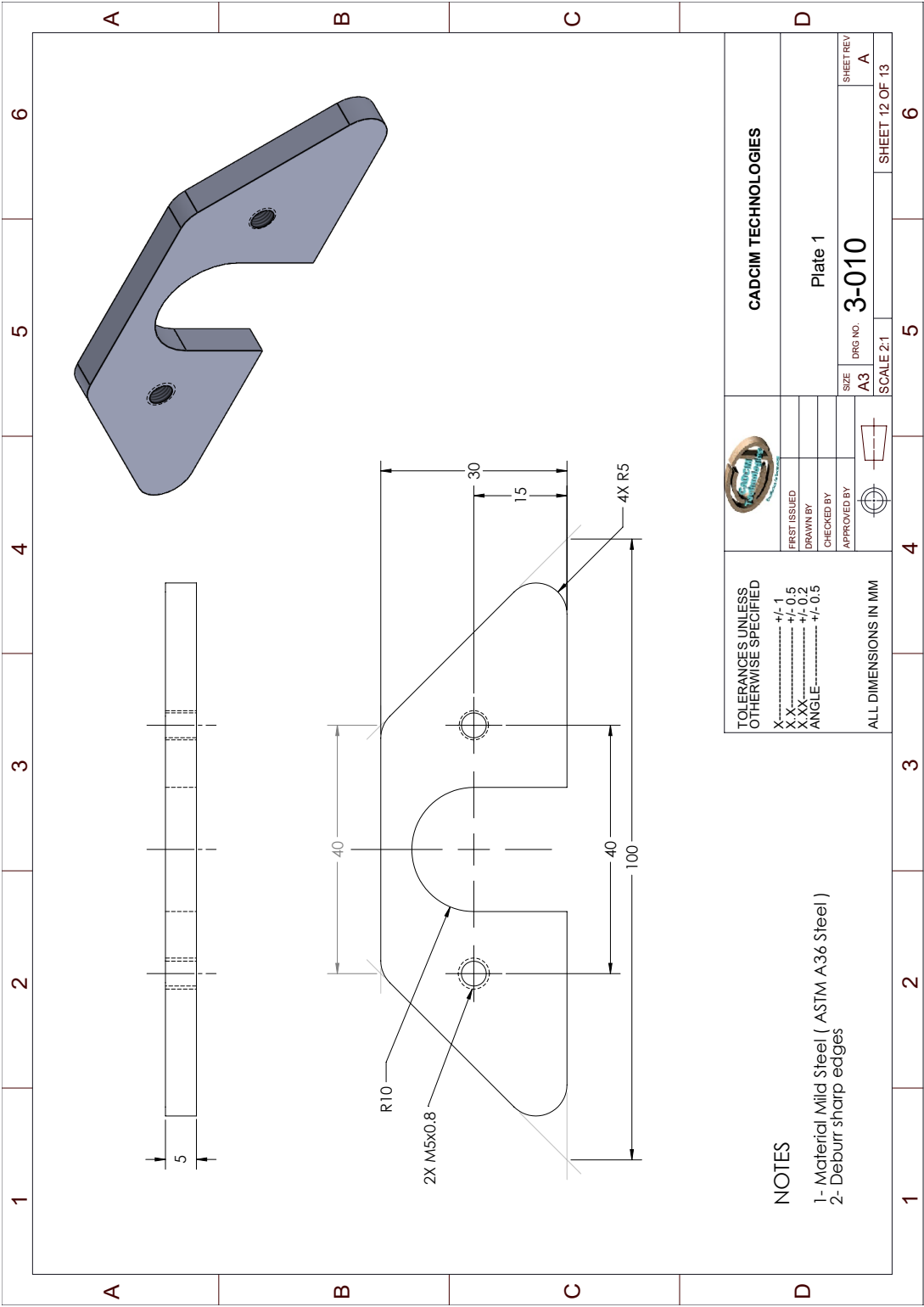


		CADCIM TECHNOLOGIES	
FIRST ISSUED	DRAWN BY	1. M4 X0.7 flat head Slotted Screw- ANSI B18.6.7M	
CHECKED BY	APPROVED BY	2. Snap ring	
ALL DIMENSIONS IN MM		SIZE A3	DRG. NO. 3-007
		SCALE 4:1	SHEET REV A
		SHEET 9 OF 15	SHEET 9 OF 15

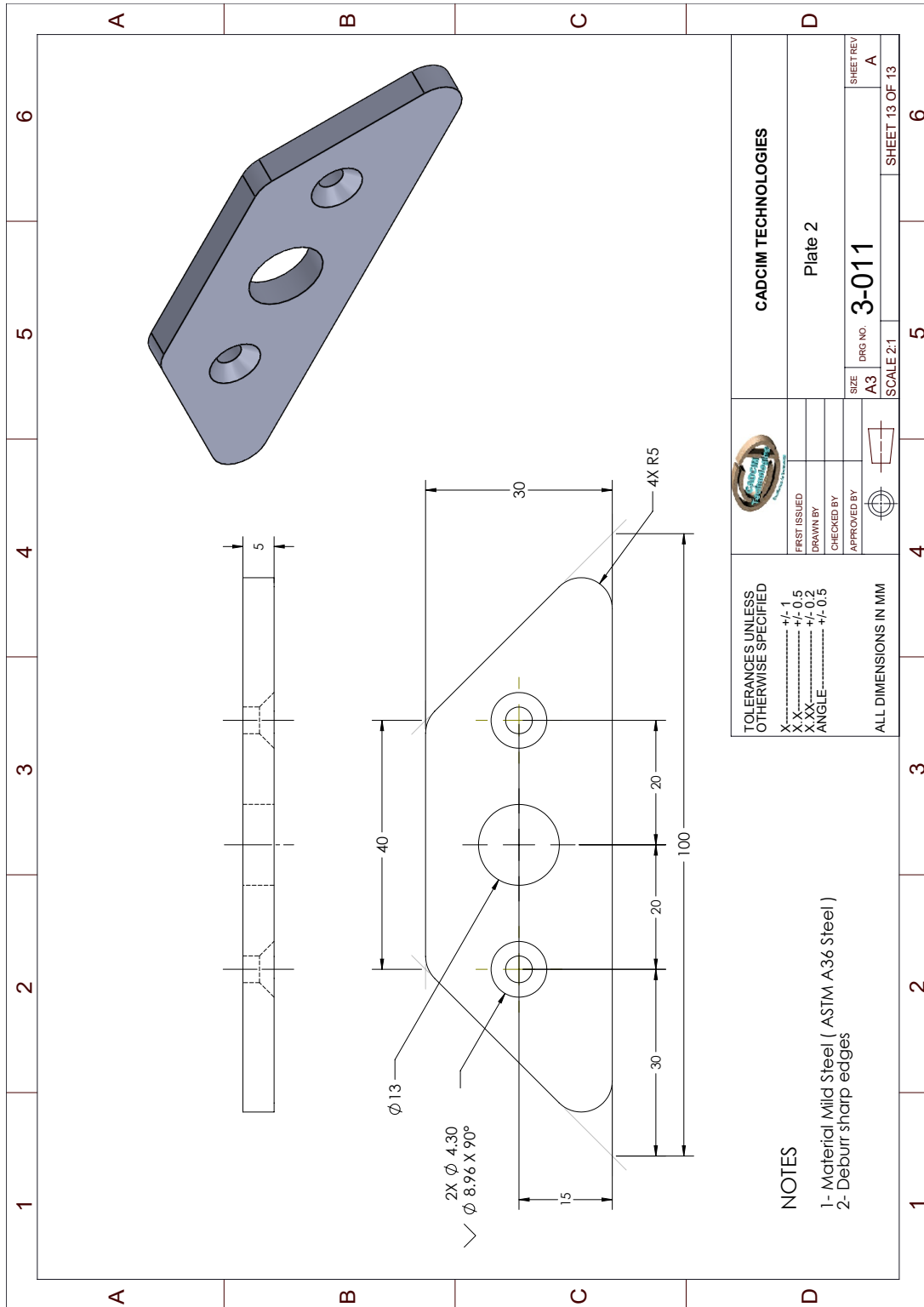
NOTES
 1- Material Stainless Steel
 2- Deburr sharp edges







<p>TOLERANCES UNLESS OTHERWISE SPECIFIED</p> <p>X..... +/- 1</p> <p>X X..... +/- 0.5</p> <p>X XX..... +/- 0.2</p> <p>ANGLE..... +/- 0.5</p>		<p>CADCIM TECHNOLOGIES</p>	
<p>NOTES</p> <p>1- Material Mild Steel (ASTM A36 Steel)</p> <p>2- Deburr sharp edges</p>		<p>Plate 1</p>	
<p>ALL DIMENSIONS IN MM</p>		<p>SIZE A3</p>	<p>DRG NO. 3-010</p>
<p>APPROVED BY</p>		<p>SCALE 2:1</p>	<p>SHEET REV A</p>
<p>FIRST ISSUED</p>		<p>SHEET 12 OF 13</p>	
<p>DRAWN BY</p>		<p>5</p>	
<p>CHECKED BY</p>		<p>6</p>	



TOLERANCES UNLESS OTHERWISE SPECIFIED X..... +/- 1 X X..... +/- 0.5 X XX..... +/- 0.2 ANGLE..... +/- 0.5		CADCIM TECHNOLOGIES Plate 2	
ALL DIMENSIONS IN MM		SIZE A3	DRG NO. 3-011
FIRST ISSUED DRAWN BY CHECKED BY APPROVED BY		SCALE 2:1	SHEET REV A

NOTES

- 1- Material Mild Steel (ASTM A36 Steel)
- 2- Deburr sharp edges

SHEET 13 OF 13