



CADSoft Technologies

www.cadsofttech.com

Consulting Division of CADCIM Technologies LLC, USA



CONSULTING FOR MECHANICAL | CIVIL | GIS | ANIMATION | IT | BIM | PRODUCT DESIGN

ABOUT US

WHO WE ARE

CADSoft Technologies is a training and consulting division of CAD/CIM Technologies, USA. CAD/CIM is one of the leading providers of quality textbooks on software related to CAD/CAM/CAE, Animation/VFX, Computer Programming, and Civil/GIS.

Incepted under the leadership of Prof. Sham Tickoo of Purdue University, USA, CADSoft focuses on imparting quality education on new generation technologies.

ESTABLISHED: 1998



FOUNDER

Prof. Sham L Tickoo is the founder and president of CAD/CIM Technologies, USA. He is currently working as a Professor at Purdue University, USA. He received MS in Industrial Technology (1989) from Northern Illinois University, Illinois, USA; MS in Industrial and Management Engineering (1980) from University of Iowa, Iowa City, USA; and BS in Mechanical Engineering (1974) from NIT, Srinagar, India. He has authored/coauthored textbooks on several major CAD/CAE/Animation software packages.

#1. OUR TEAM



MANAGEMENT



Ms. Sunita Bhat-Managing Director: Sunita Bhat, a B.Tech in Electronics and Communication and Masters in Business Administration, is a result oriented professional with 28 years of experience in managing operations across companies & corporate.

Mr. Manash Chatterjee-Program Manager: Manash Chatterjee is a qualified Civil Engineer with a post graduation in Business Management, Human Resource Management with more than 17 years of experience in the field of AEC and construction management. His experience is mainly in providing training in the workflow implementation of BIM in AEC industry. Apart from training, his AEC professional experience spans over 15 years which includes designing, CAD management, and project management. He is the contributing author of many CAD and BIM titles. He is an Alumni of MICA (Ahmedabad) and a member of Institution of Engineers (I)

Mr. Rajendra Badola: Publishing Manager: An avid book reader and a prolific writer, Mr. Rajendra Badola has been associated with publishing industry for more than 12 years and has a long experience of working as a content editor in various organizations. He has been serving this organization as an Editor from past six years.

SERVICES



Mechanical

- ✓ CAD Modeling and Detailing
- ✓ Design Modification
- ✓ Component Design
- ✓ New Product Design
- ✓ 3D Printing

Civil/GIS/Architecture

- ✓ Structural Analysis & Design (R.C.C./Steel)
- ✓ BIM Modelling
- ✓ GIS
- ✓ Project Management
- ✓ Quantification
- ✓ Virtual Reality (VR) views of models
- ✓ Bar Bending Schedule
- ✓ Report Generation
- ✓ AutoCAD Drafting 2D/3D

Animation/VFX/IT

- ✓ Interior Views
- ✓ Exterior Views
- ✓ Lighting Effect
- ✓ Different Types of artworks such as Mandala design, Texture Design, Print design
- ✓ Graphic Design
- ✓ 2D Drafting Design
- ✓ Fashion Designing Art
- ✓ Foliage and Tree Model
- ✓ Walkthrough
- ✓ Low poly Hih poly data

MECHANICAL SERVICES



CAD Modeling and Detailing

- ✓ 3D modeling and drawing creation
- ✓ Detailing and drafting
- ✓ 2D to 3D conversion
- ✓ Clearance/interference analysis
- ✓ Dimension management
- ✓ ECN/ECR



Design Modification

- ✓ Part standardization
- ✓ Minor modifications
- ✓ Design optimization
- ✓ Design variants



Component Design AND New Product Design

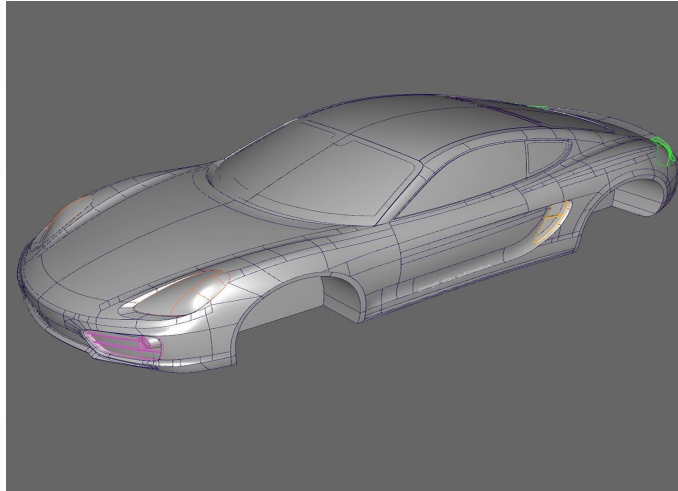
- ✓ Plastic component design
- ✓ Cast component design
- ✓ Sheet-metal component design
- ✓ Forged component design
- ✓ Concept design
- ✓ Class A Surface Design
- ✓ Design detailing
- ✓ Design validation
- ✓ Parametric modelling
- ✓ Reverse engineering

GLIMPSE OF SERVICES-MECHANICAL

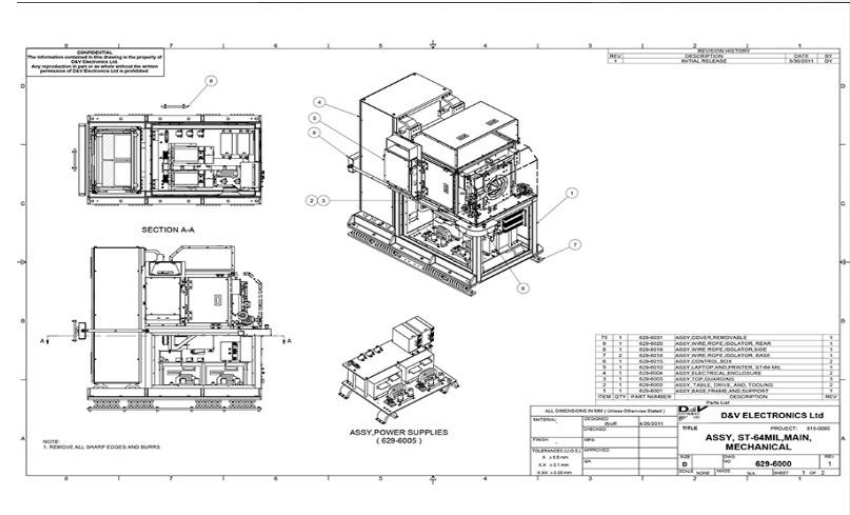
- ✓ Reverse Engineering for furniture and products
- ✓ P&ID Drawings for Process Plants, Milk Plants, Food industry
- ✓ General Layout Drawings for Production purposes
- ✓ Heavy Industrial Designs like Agricultural Implementation Machinery (Rotary blades, Harrow, Cultivators)
- ✓ Drafting and Designing for furniture fittings
- ✓ Designing Technical illustrations/ products manuals for different products from furniture to aircraft
- ✓ Real time product visualization and renderings with the help of keyshot
- ✓ Car Design using Alias for Maruti Suzuki
- ✓ Reverse Engineering of Piston and Helmet



PROJECTS - MECHANICAL



Car Design Model created in Alias Design for Maruti Suzuki

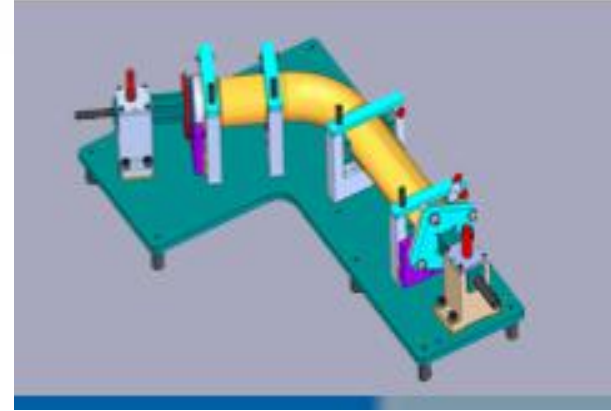


2D to 3D Conversion for D&V Electronics Pvt. Ltd.

PROJECTS - MECHANICAL

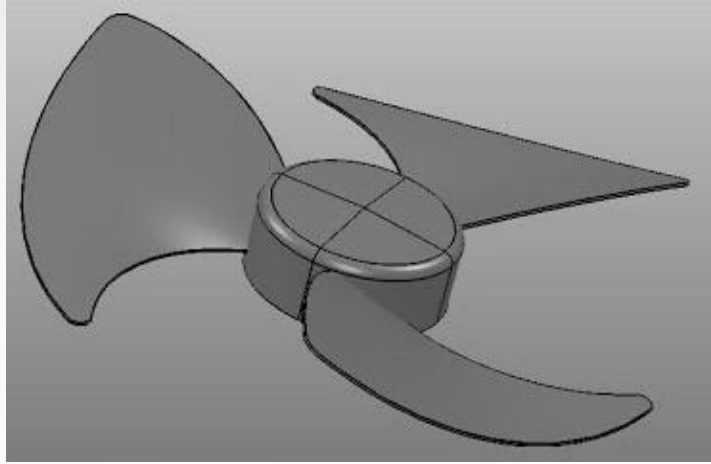


Designed Play Systems in SolidWorks for
Kidstuff Play Systems, Inc. Indiana, USA



Designed Pipe fixture for Satyam Components
Auto Ltd. in NX software

PROJECTS - MECHANICAL

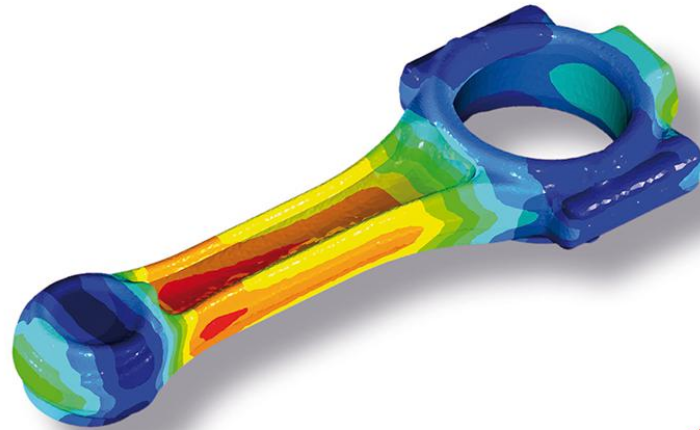


Reverse Engineering using NX in Indo Tooling Pvt. Ltd.



Car Design model created in SolidWorks for F1 Schools Competition

PROJECTS - MECHANICAL



Connecting Rod using SolidWorks Simulation

CIVIL/GIS/ARCHITECTURE SERVICES



Ciivil / GIS

- ✓ Paper to CAD Conversion
- ✓ Construction Drawing Services
- ✓ Land Development Design
- ✓ Geospatial Services
- ✓ GIS

Architectural

- ✓ BIM
- ✓ Architectural Drafting and Detailing
- ✓ SketchUp Modeling
- ✓ 3D Rendering and Walkthrough

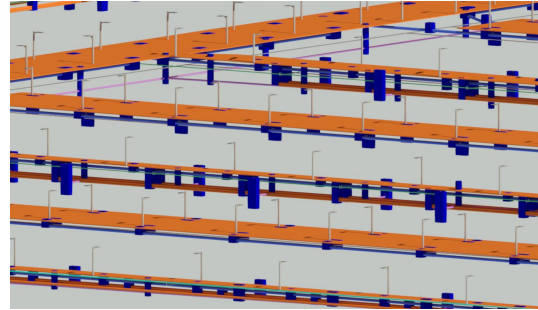
Structural

- ✓ Industrial Structure Design and Analysis
- ✓ Custom Home Design and Analysis

GLIMPSE OF SERVICES- Civil/GIS/ARCHITECTURE

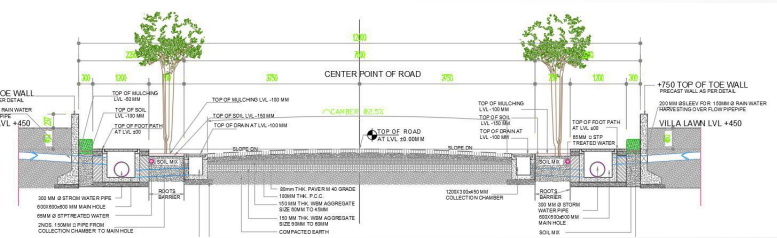
TRL Riceland

Conversion of 2D into 3D
Laying of Pipes, Electric Cables, Chambers, Roads,
Street Lights using Revit
Clash Detection of Services
Drafting on AutoCAD



Siliguri Project

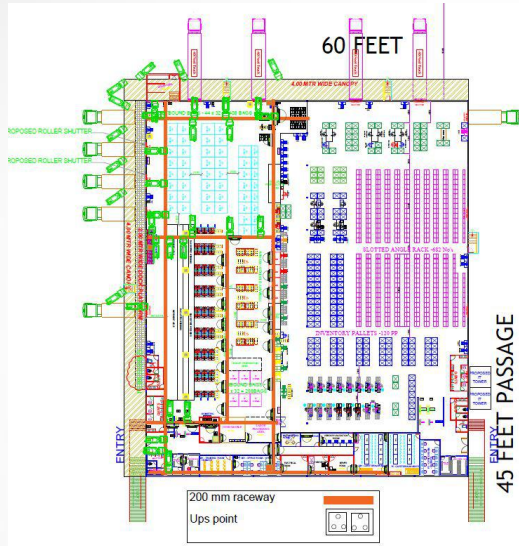
Drafting of Layout for Cameras
Created Blocks for Bullet Cameras, Fire safety
Blocks for Dome camera
Laying of Cable tray using AutoCAD
Placement of cameras keeping in mind their FOV
Placement of Sprinklers, Speakers, and much more



Suryam International Project

Design and Analysis of Double and Triple Module Structure for Solar Installation
using STAAD Pro

PROJECTS - Civil/GIS/ARCHITECTURE



Block	Layer	No.
	Bullet Camera	33
	Dome camera	38
	Cable tray	
	Floormount 24U	01
	Wallmount	03

FC AREA = 24,519 Sqft (STORAGE CAPACITY ~30,500 C)
MH AREA = 20,833 Sqft

Activate

CCTV Layout of retail in Delhi



Transmission line design in Rajasthan, India

PROJECTS - Civil/GIS/ARCHITECTURE



SPG Project, Dwarka

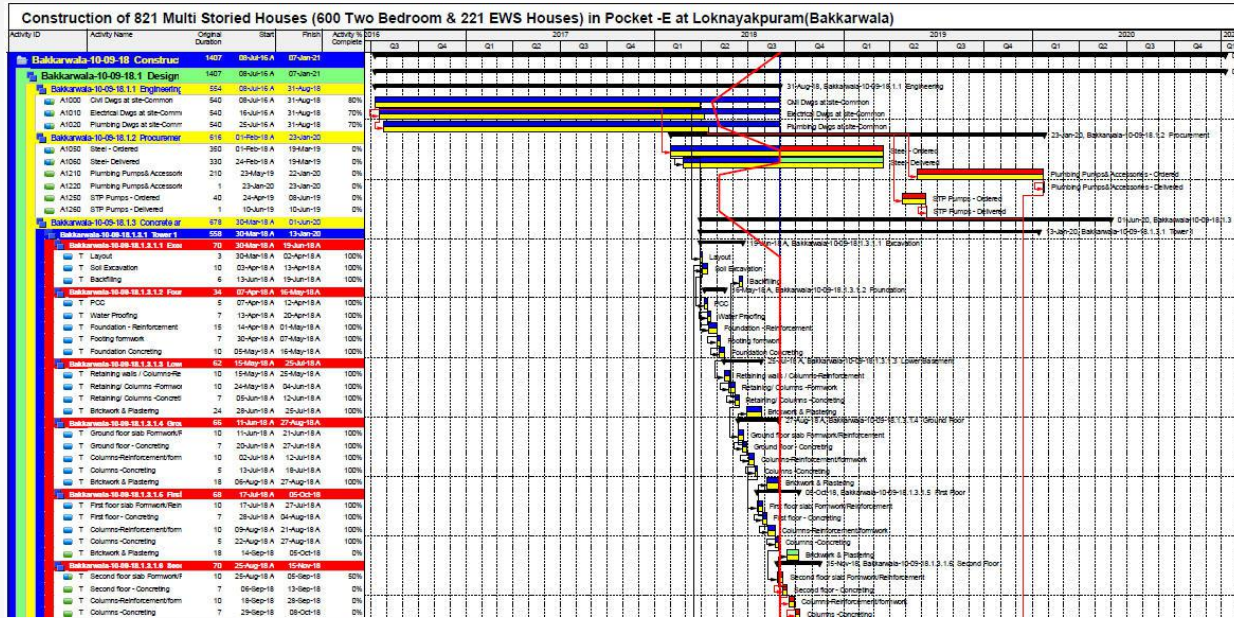
- Structural Design
- Drafting of Plans using MSP software
- Architectural views
- Interior Designing
- Clash Detection
- Generating reports using STAAD Pro



Bakkarwala Project

- Project planning and scheduling of project
- Preparing the baseline schedule by using Primavera P6 (17.12) software
- Tracking of the Project Progress
- Generating Reports

PROJECTS - Civil/GIS/ARCHITECTURE



Bakkarwala Project using Primavera

ANIMATION/VFX/IT

- ✓ Interior Views
- ✓ Exterior Views
- ✓ Lighting Effect
- ✓ Different Types of artworks in Illustrator and Photoshop like Mandala design, Texture Design, Print design
- ✓ Graphic Design
- ✓ 2D Drafting Design
- ✓ Fashion Designing Art
- ✓ Foliage and Tree Model
- ✓ Walkthrough
- ✓ Low poly High poly data

SERVICES

- ✓ For Architects
- ✓ For Fashion Designers and Related Technologies
- ✓ For Interior Designers
- ✓ For Exterior Designers
- ✓ Adding Lighting and related photoshop effects



PROJECTS - ANIMATION/VFX/IT



Mandala Art Done in Illustrator



MANGO ROUTES

Logo Designed for Mango Routes company
in Photoshop

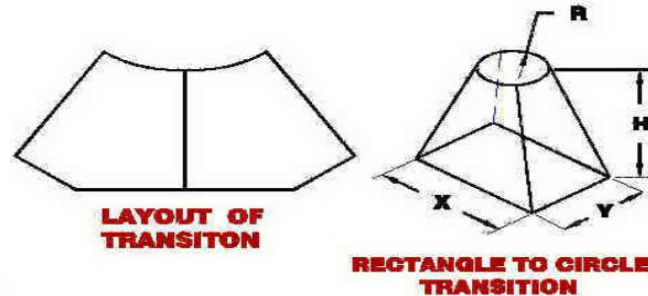
PROJECTS - ANIMATION/VFX/IT



Exterior View - Model and Design created in 3ds Max and Photoshop for Sunovstech Infra Pvt. Ltd.

Software Development - SMLayout

SMLayout addresses the needs of sheet metal fabricators and manufacturers of sheet metal products to generate flat layout of some complicated geometric shapes. Written in AutoLISP, SMLayout can develop flat layout of cones, cylinders, elbows, rectangular boxes, transitions, cone-cylinder intersections, sphere-cylinder intersections, cylinder-cylinder intersections, and various shapes of Tank-Heads. The programs have a dimensioning option that will automatically dimension the flat layout. When you run a program, the user is prompted to enter information about the part geometry, and then the program automatically generates the flat layout on the computer screen.



Patent Product- Cargo Organizer for Vehicles

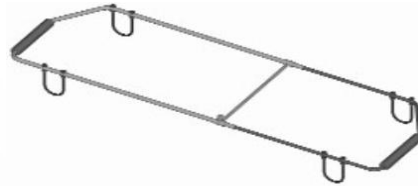
The function of Cargo Organizer is to maintain the cargo, or the like, in position even when subjected to sudden movements caused during transit of the vehicle in which the cargo is transported.



Adjusting Cargo Organizer in a SUV



Adjusting Cargo Organizer in a car

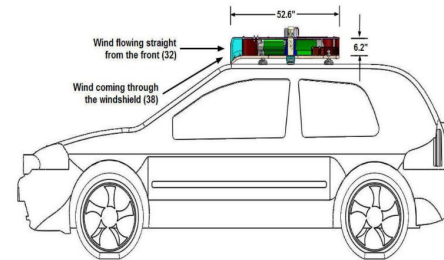
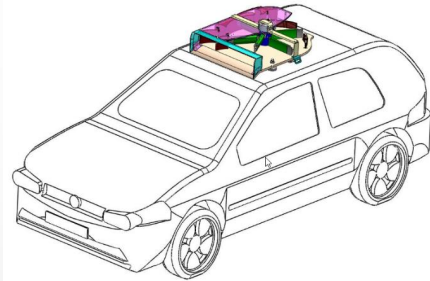


Research and Development- Wind Turbine



The primary application of the Tickoo Wind Turbine is in charging the batteries of an automobile when it is in motion. The batteries thus charged can be used to run the vehicle and its accessories.

This Turbine has numerous advantages over a conventional turbine. This has been made possible by designing the mechanisms that deflect the wind in the desired area of the turbine and over a larger angle. Also, the drag component of the wind force is drastically reduced and the design maximizes the utilization of the wind



Clients-Partial List





www.cadsofttech.com
info@cadsofttech.com

Regional Office:

CADSoft Technologies
Unit-256 B2, Tower A, Spaze iTech Park, Sohna -
Gurgaon Rd, Sector 49, Gurugram, Haryana 122018,
India
Tel: 0124-4221793
Mobile: 9211918664

Head Office:

CADCIM Technologies
525, St. Andrews Drive
Schererville, IN
46375, USA
Tel: (219)-2284908